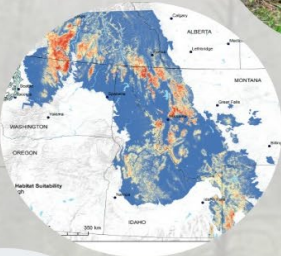


Canada Lynx of the Rockies Research



Lynx ecology

- Established deeper understanding of denning habitat
- Determined importance of horizontal cover and multi-story forest



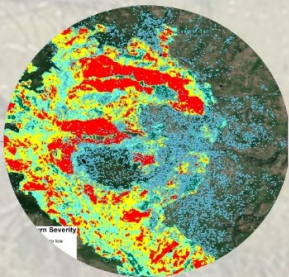
Distribution mapping

- Mapped lynx distribution across entire northern and southern Rockies



Response to recreation

- Identified habitat important to both lynx and recreationists
- Found lynx tolerance to non-motorized and low-density recreation in study area



Response to fire

- Determined importance of unburned “islands” of green trees after fire
- Studying lynx response to increasingly widespread early succession lodgepole forest



Response to forest management

- Identified forest structure mosaics related to kitten production in spruce-fir forests
- Quantified lynx response to forest management type, timing and recovery



Response to insects

- Demonstrated lynx tolerance to beetle-killed overstory
- Established importance of preserving forest understorey



Learn more about the Canada Lynx of the Rockies Research Program by visiting our website

Long-term research and monitoring is critical for answering management questions.

It provides continuity during changing conditions.

It provides opportunities to answer unforeseen questions in the future using long-term datasets.

It allows faster responses to management needs.