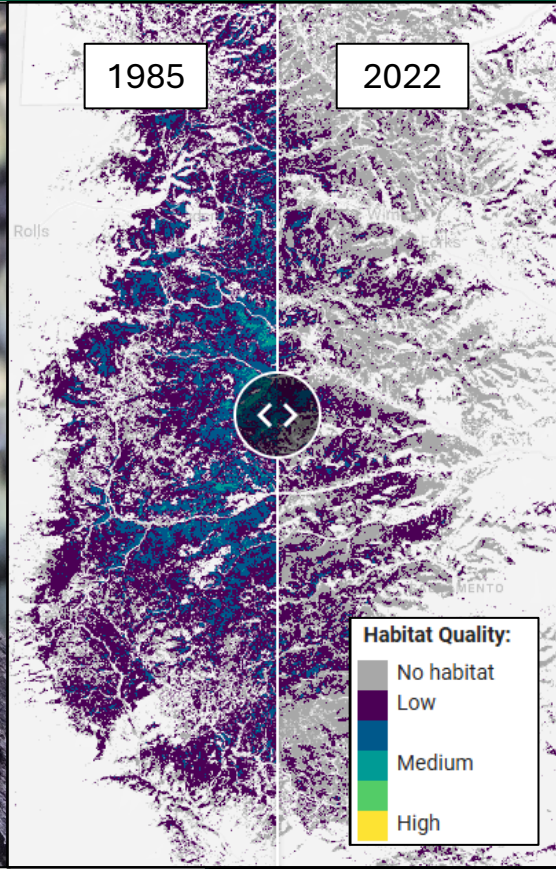




Forest Service  
U.S. DEPARTMENT OF AGRICULTURE

# ‘Living Maps’ for Wildlife



Landscapes are changing rapidly – and wildlife maps need to be able change rapidly too



‘Living maps’ allow managers to plan projects and respond to management needs using the most up-to-date information possible



Living maps use real-time automated tools based on global satellite imagery combined with animal locations to produce cutting edge, rapidly updatable, and highly accurate species habitat models and long-term habitat trends



Learn more about Living Maps for Wildlife by visiting our website